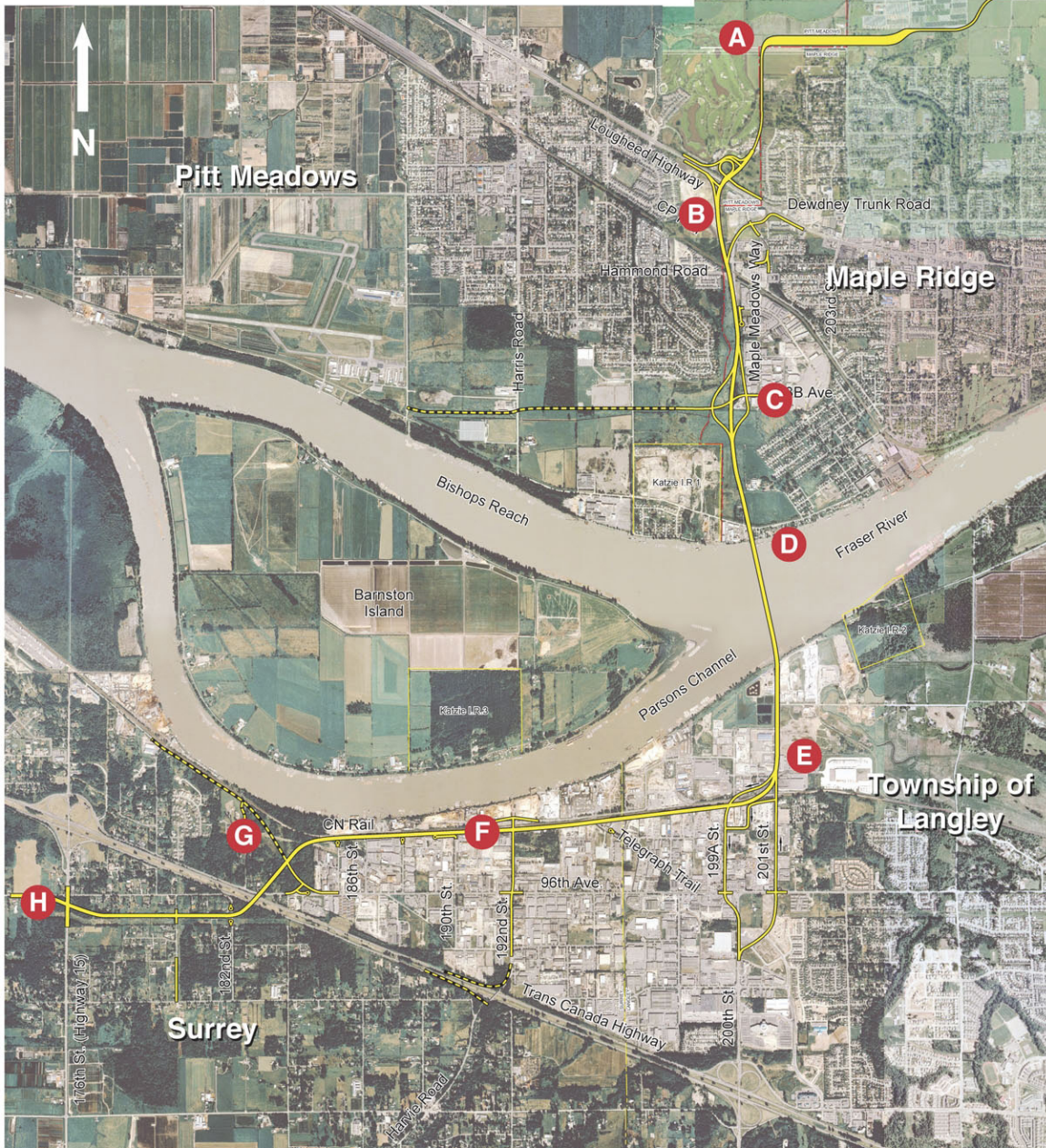




The Golden Ears Bridge

Greater Vancouver Transportation Authority



- A** The Abernethy Connector will head north and east from the Golden Ears Bridge interchange at Lougheed Highway to 128th Avenue in Maple Ridge.
- B** A new roadway heading south, crossing both the Lougheed Highway and the CPR tracks.
- C** An interchange at 113B Avenue.
- D** A new bridge across the Fraser River.
- E** On the south side, an off-ramp to 199A Street and on-ramp from 201st Street, connecting Langley traffic to 200th Street.
- F** A connection to 192nd Street for Port Kells access.
- G** A new east/west road connecting traffic to 176th Street, after crossing Highway #1.
- H** An upgraded intersection at 176th Street and 96th Avenue.