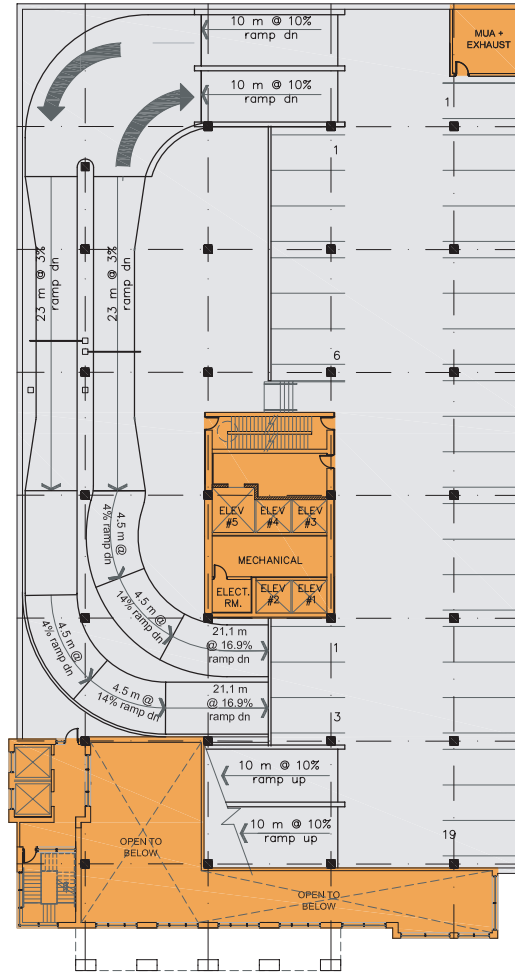
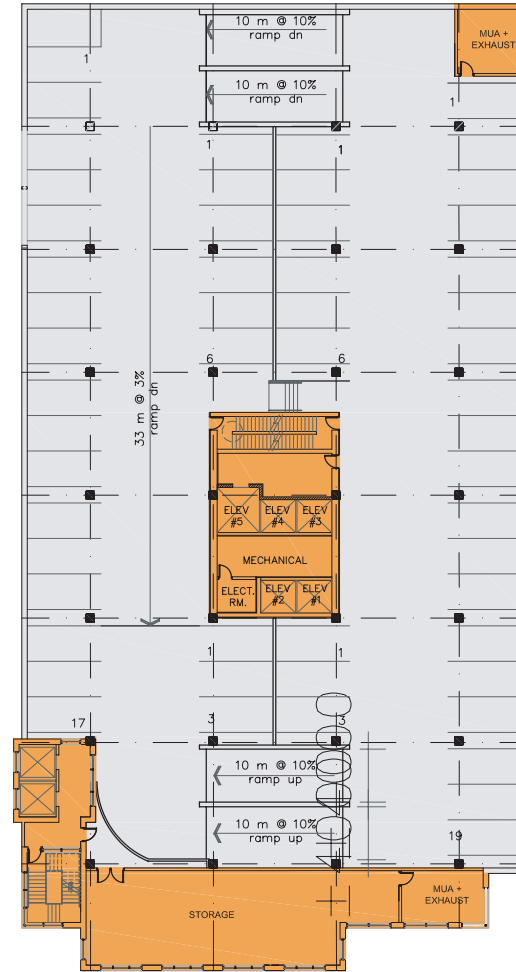


# STAMPEDE STATION



PHASE II  
2nd FLOOR  
PARKING P0 - P1



PHASE II  
3rd-4th FLOORS  
PARKING P4 - P7

**WAM Development Group**  
10213 - 111 Street,  
Edmonton, AB T5K 2V6  
Tel: (780)423-5525  
Fax: (780)425-3564  
www.wamdevelopment.com

A development by:



**OPUS Building Corporation**  
1702 - 4 Street S.W.  
Calgary, AB T2S 3A8  
Tel: (403)283-0000  
Fax: (403)244-8943  
www.obc.com