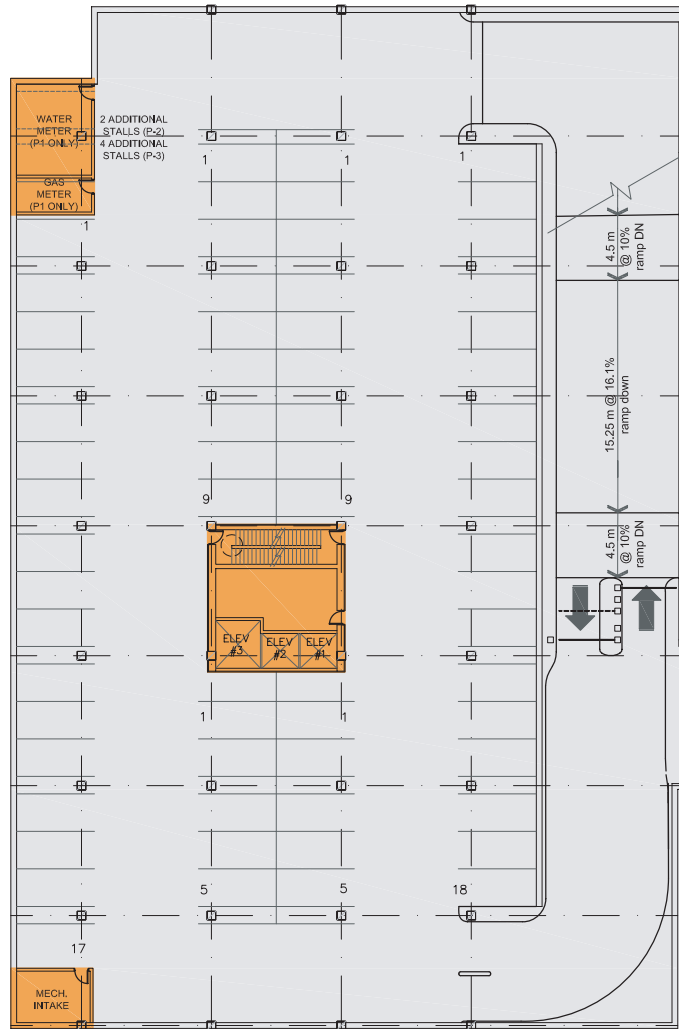
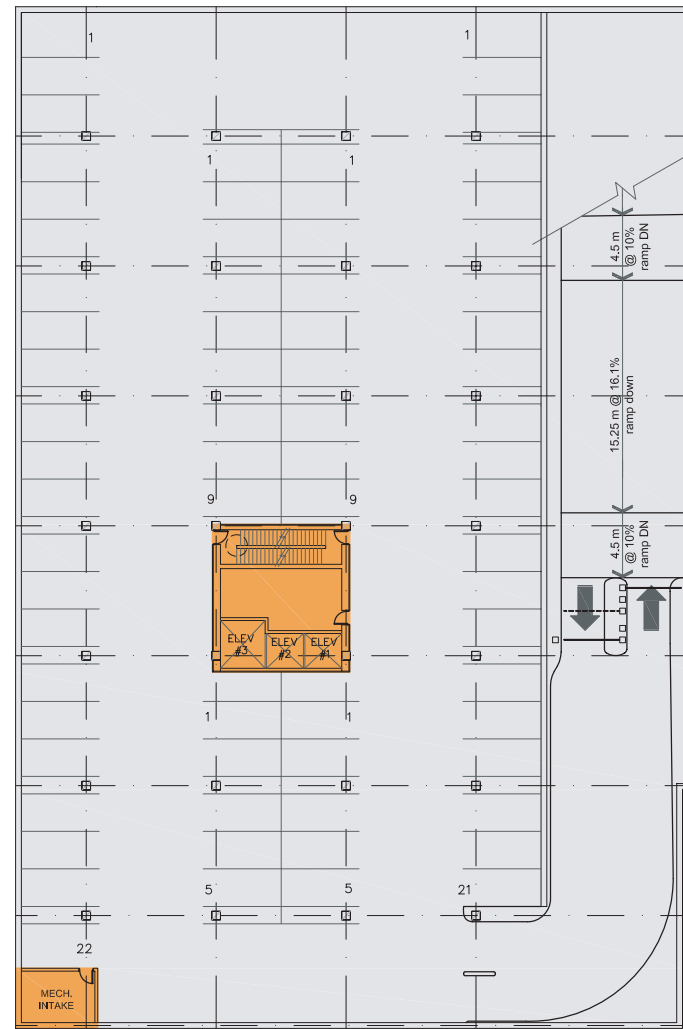


STAMPEDE STATION



PHASE I
UNDERGROUND PARKING B1, B2, B3



PHASE 1
UNDERGROUND PARKING B4

WAM Development Group
10213 - 111 Street,
Edmonton, AB T5K 2V6
Tel: (780)423-5525
Fax: (780)425-3564
www.wamdevelopment.com

A development by:



OPUS Building Corporation
1702 - 4 Street S.W.
Calgary, AB T2S 3A8
Tel: (403)283-0000
Fax: (403)244-8943
www.obc.com